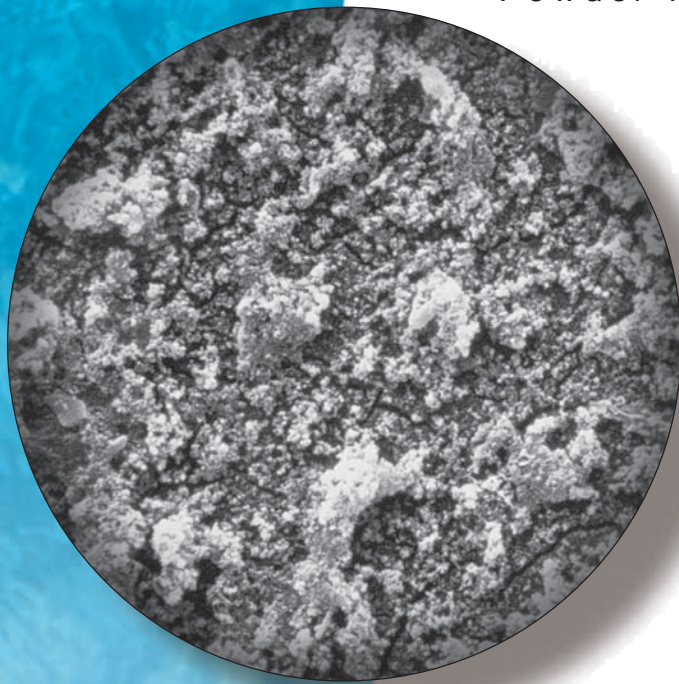


# OptiClean™

## Powder Membrane Cleaners



OptiClean™ powder membrane cleaners effectively remove inorganic scale, metals, biological growth and organic foulants from RO membranes

OptiClean™ powder membrane cleaners integrate the most recent biodegradable polyelectrolyte formulations to effectively remove inorganic and organic foulants from today's polyamide thin-film composite and cellulose acetate membranes. Each cleaner mixes quickly and easily into solution to form a liquid mixture that vigorously releases membrane foulants without harming the membrane surface. A regular maintenance schedule including OptiClean™ membrane cleaners ensures optimum system performance.

**OptiClean A™** For Removing Scale and Metals from Polyamide Thin-Film Composite and CA Membranes. Foulants effectively removed by OptiClean A™ include:

- Calcium Carbonate
- Calcium Sulfate
- Barium Sulfate
- Strontium Sulfate
- Iron
- Metal Oxides

**OptiClean B™** For Removing Acid Insoluble Foulants from Polyamide Thin-Film Composite Membranes. Foulants effectively removed by OptiClean B™ include:

- Silt
- Colloids
- Organics
- Microbiological
- Acid Insoluble
- Mucilaginous Material

**OptiClean C™** For Removing Acid Insoluble Foulants from CA Membranes. Foulants effectively removed by OptiClean C™ include:

- Silt
- Colloids
- Organics
- Microbiological
- Acid Insoluble
- Mucilaginous Material

**OptiClean S™** for removing silica from Polyamide Thin-Film Composite, CA and UF Membranes

- **Prepare system for cleaning. Fill cleaning tank with good quality RO permeate water.**
- **Mix 1 pound of OptiClean™ for each 15 gallons of water in the cleaning tank.**
- **Recirculate solution for at least 1 hour. If possible, prevent permeation.**
- **Static soaking heavily fouled membranes is recommended. After soaking, recirculate again for a minimum of 30 minutes.**
- **Rinse systems at low pressure prior to system start-up.**
- **Discard system product water 15-30 minutes after system start up.**

Pressure and Element Flows:

- Pressure: 60 psi
- 4" Membrane Flow: 7 GPM
- 8" Membrane Flow: 35 GPM



**PROFESSIONAL WATER TECHNOLOGIES, Inc.**

High-Performance Reverse Osmosis Chemicals

For more information, contact us today:

**USA Headquarters:**

1048 La Mirada Court, Vista, CA 92081 • Toll-free: 800-914-9072 • Phone: 760-639-4400  
Fax: 760-639-4439 • [www.pwtinc.com](http://www.pwtinc.com) • E-mail: [sales@pwtinc.com](mailto:sales@pwtinc.com)

**México:**

Puerto Progreso Interior B, Col. La Fe, San Nicolas de los Garza, N.L., México  
Phone: 52-8989-6577 • Fax: 52-8989-6578 • E-mail: [ventas@pwtinc.com](mailto:ventas@pwtinc.com)

**China:**

Room 1101, Eton Place, No. 555 Pudong Avenue, Pudong New District, Shanghai, 200120 China  
Phone: 021-68590305, 68590306, 68590307 (ext. 809) • Fax: 021-68590301 • E-mail: [sells@pwt-china.com](mailto:sells@pwt-china.com)

**Middle East & Africa:**

VasuChem Technologies FZC, A2-62 SAIF Zone P.O. Box 9446, Sharjah, UAE  
Phone: 971-6-5570068 • Fax: 971-6-5574068 • E-mail: [info@vasuchem.com](mailto:info@vasuchem.com)

**India:**

Vasu Chemicals, Vasu Centre, Military Road, Marol, Mumbai 400 059, India  
Phone: 9122-29209622/23 • Fax: 9122-29209624 • E-mail: [info@vasuchemicals.com](mailto:info@vasuchemicals.com)