

SST-60
Salt Saving Technology
Softening Resin

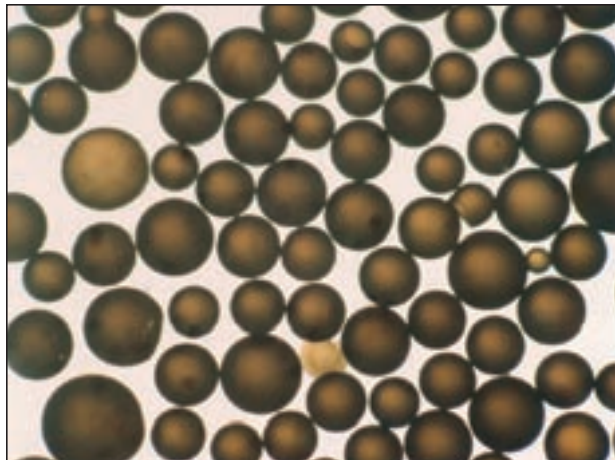
Technical Data

PRODUCT DESCRIPTION

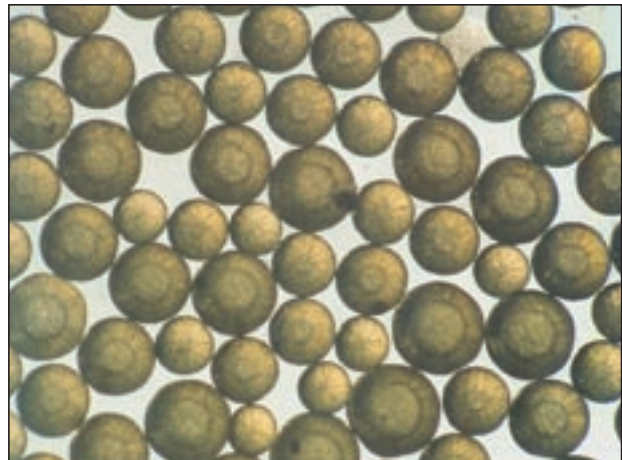
The **Purolite SST** family of high efficiency softening resins is based on shallow shell technology. Simply stated, the shorter the diffusion path, the more rapid the softening exchange occurs. This is particularly important during regeneration. Reducing the depth of penetration required to cleanse the resin allows for a more complete regeneration and provides a higher, more efficient utilization of the regenerant. The result is a group of resins

with unsurpassed salt efficiency, lower leakage, and reduced rinse water requirements. When compared to conventional softening resins, regenerant reductions of 2 to 4 lbs. per cubic foot of resin per regeneration is possible without sacrificing capacity or increasing leakages. This translates to a salt savings of 700 to 1,400 lbs. per cubic foot per year based on daily regenerations.

Typical Physical & Chemical Characteristics	
Polymer Matrix Structure	Polystyrene crosslinked with Divinylbenzene
Physical Form and Appearance	Clear Spherical beads
Whole Bead Count Functional Groups	90% min.
Functional Groups	Polystyrene sulphonate
Ionic Form, as shipped	Na ⁺
% Moisture	33 - 45
Crush Strength	> 1500 gm/bead (chatillon)
Shipping weight (approx.)	50 lb/ft ³
Particle Size	+1.2 mm < 5%, -0.3 mm < 1%
pH Limits	0 - 14
Specific Gravity, Na ⁺ Form	1.20



PUROLITE C-100 Standard Resin



PUROLITE SST-60 Resin

Under a microscope, **PUROLITE SST** resins look different than other resins. That's because the resins have inert centers. Only the outer shell is functionalized. (See Figure 1)

By shortening the diffusion path (See Figure 2) through the use of shallow shell technology, each resin bead presents the same depth of functionality which leads to more efficient use of regenerant and therefore, better regeneration. This in turn leads to higher capacities, lower leakages and better handling of iron.

PUROLITE SST resins exhibit superior toughness and durability of osmotic shock versus conventional resins. This is key in industrial applications and portable exchange units where the resin sees a lot of physical handling. These resins save water too. The shallow shell technology of **PUROLITE SST** products regenerate with about 50% less water and rinse very quickly to quality.

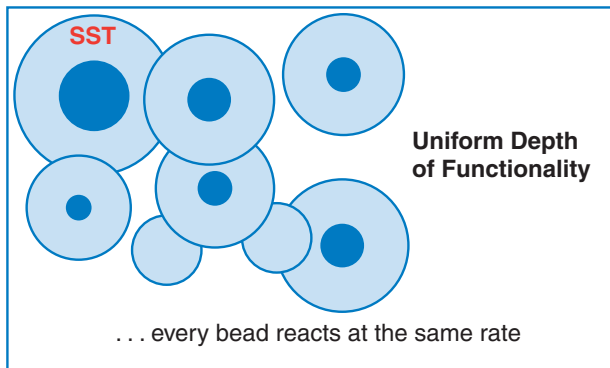


Fig. 1 Uniform Depth of Functionality

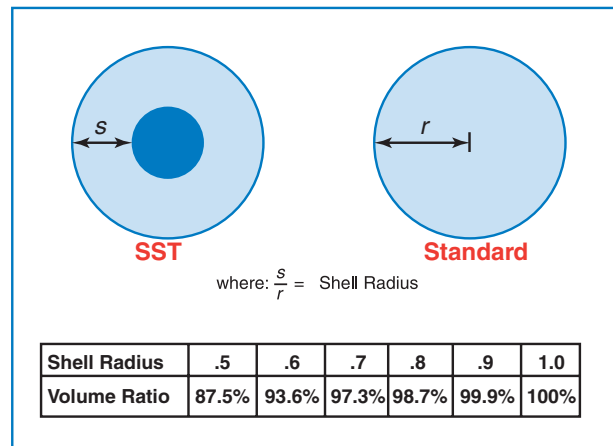


Fig. 2 Diffusion Path

SST-60 ADVANTAGES

- Higher Recovered Capacity Per Pound of Salt
- Lower Leakages at All Regenerant Levels
- Better Iron Removal
- Lower Rinse Requirements
- No equipment Modifications Needed
- Less Susceptible to Iron Fouling
- Shorter Regeneration Cycles
- Superior Physical Strength
- More Resistant to Oxidation
- Non-Solvent Sulfonated

Standard Operating Conditions (Co-current Softening of Water)				
Operation	Rate	Solution	Minutes	Amount
Service	8 - 60 BV/h 1.0 - 7.5 gpm/ft ³	Influent water	per design	per design
Backwash	Refer to Fig. 4	Influent water 5° - 30°C (40° - 80°F)	5 - 20	1.5 - 4 BV 10 - 20 gal/ft ³
Regeneration	2 - 7 BV/h 0.25 - 0.9 gpm/ft ³	8 - 20% NaCl	10	32 - 340 g/l 2 - 15 lb/ft ³
Rinse, (slow)	2 - 7 BV/h 0.25 - 0.90 gpm/ft ³	Influent water	12 - 60	1.5 - 2 BV 10 - 15 gal/ft ³
Rinse, (fast)	8 - 40 BV/h 1.0 - 5.0 gpm/ft ³	Influent water	6 - 30	1 - 5 BV 8 - 40 gal/ft ³
Backwash Expansion 50% to 75%				
Design Rising Space 100%				
"Gallons" refer to U.S. Gallon = 3.785 liters				

Fig. 3 PRESSURE DROP VS FLOW RATE

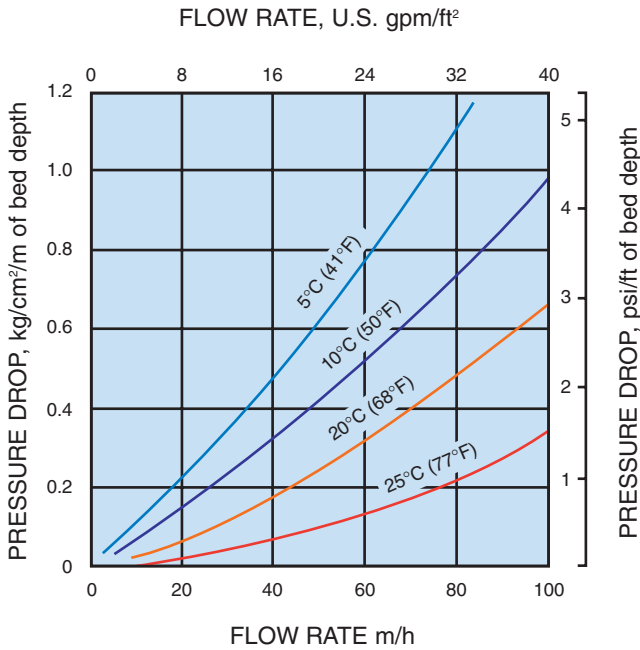
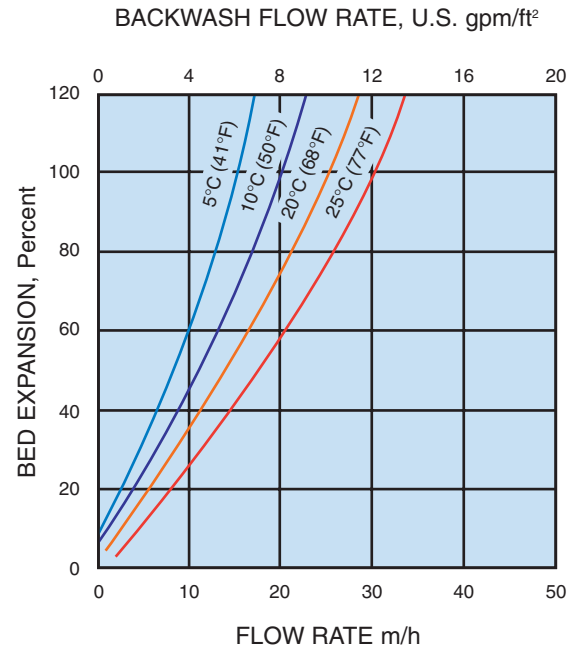
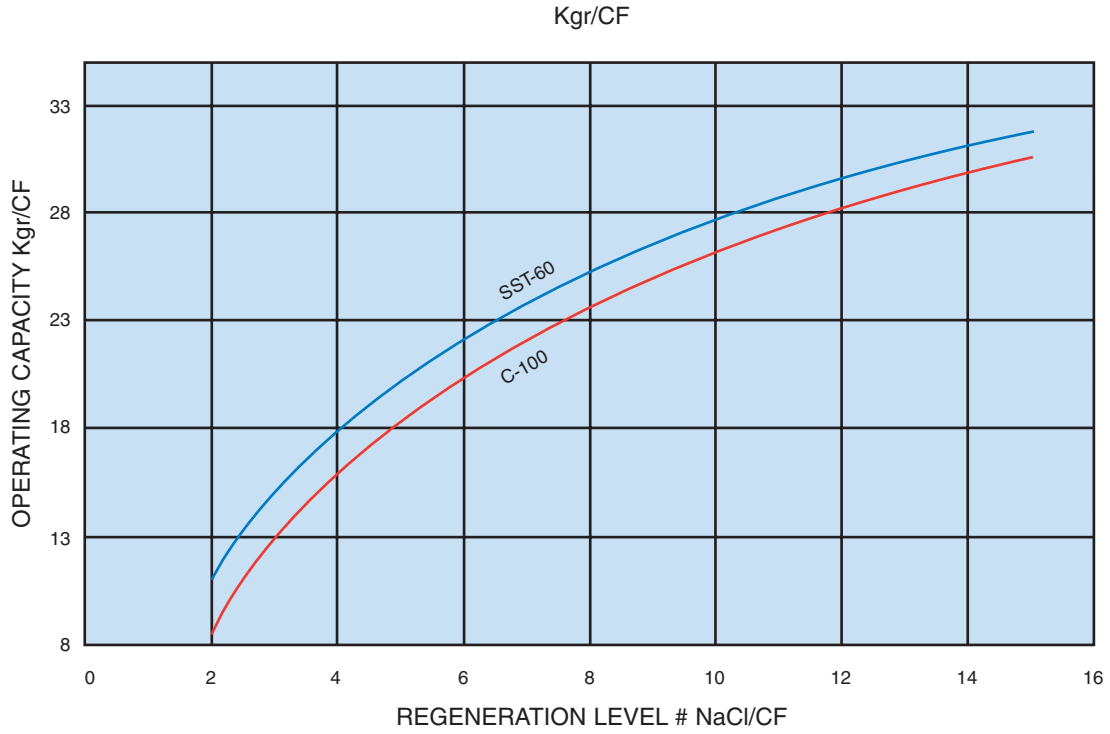


Fig. 4 BACKWASH EXPANSION



PUROLITE SST-60 vs C-100 CAPACITY

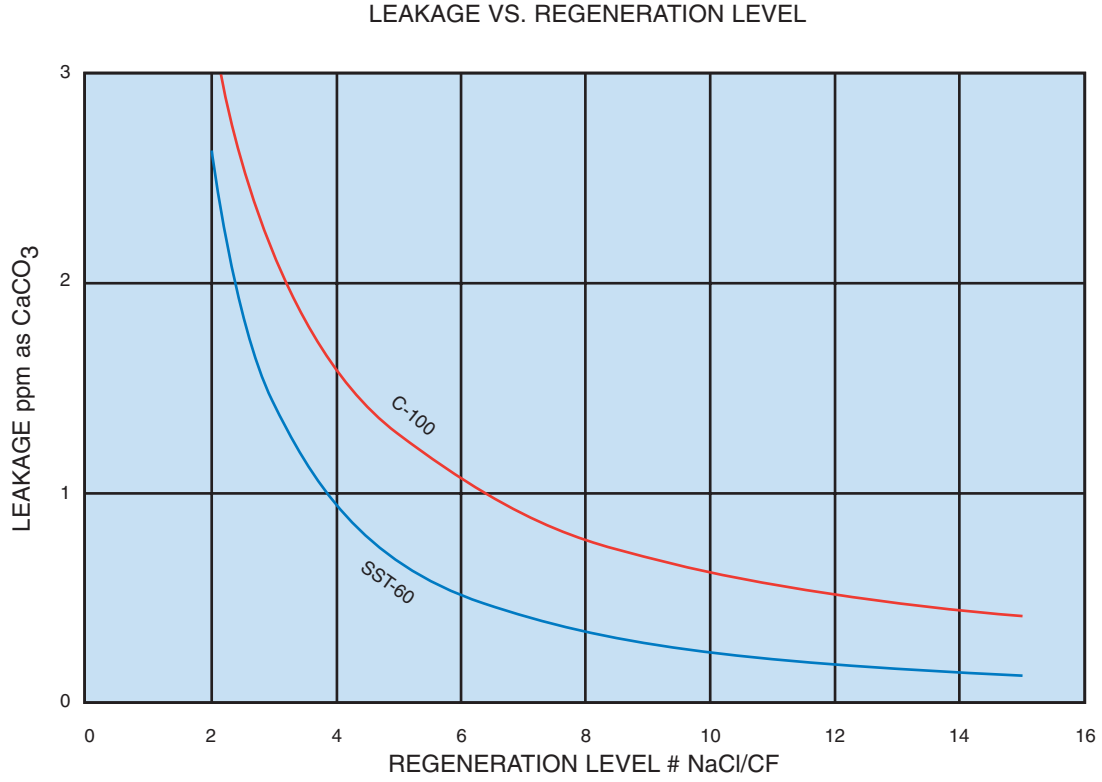
Fig. 5 OPERATING CAPACITY



NaCl (#/CF)	SST-60 Op. Cap (Kgr/CF)	C-100 Op. Cap (Kgr/CF)
2	11.2	9.2
3	14.8	12.8
4	18.0	15.2
5	20.0	18.2
6	22.5	19.5
7	24.5	22.3
8	25.0	24.3
9	26.2	25.6
10	27.4	26.9
12	30.0	28.5
15	31.1	29.4

PUROLITE SST-60 vs C-100 LEAKAGE

Fig. 6 LEAKAGE VS. REGENERATION LEVEL



NaCl (#/CF)	SST-60 Leakage (ppm)	C-100 Leakage (ppm)
2	2.1	3.7
3	1.3	2.1
4	0.9	1.4
5	0.7	1.2
6	0.6	1.1
7	0.5	0.9
8	0.4	0.8
9	0.35	0.7
10	0.3	0.6
12	0.2	0.5
15	0.1	0.4

Fig. 7 SOFTENING CO-FLOW

CAPACITY CORRECTION FOR SODIUM

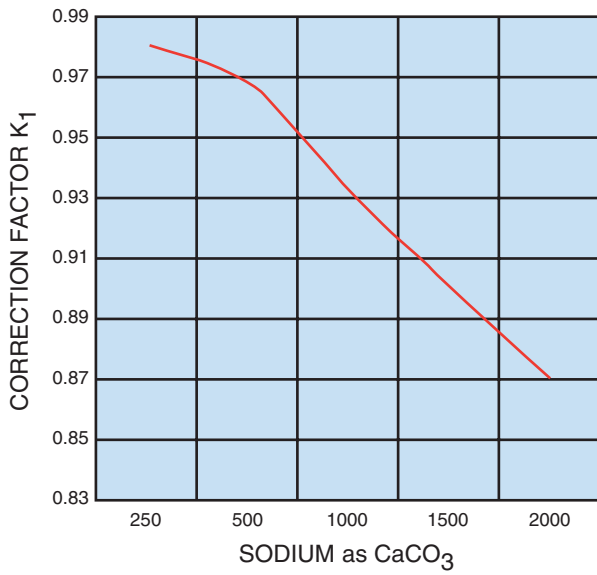


Fig. 8 SOFTENING CO-FLOW

CAPACITY CORRECTION FOR TOTAL HARDNESS

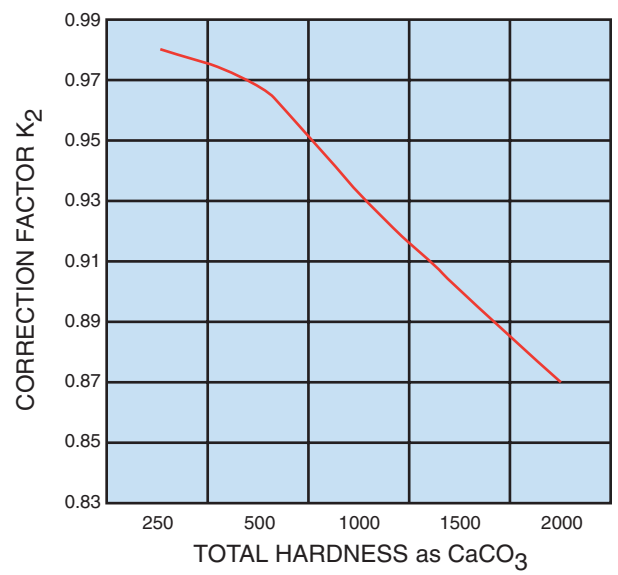


Fig. 9 SOFTENING CO-FLOW

CAPACITY CORRECTION FOR FLOW RATE

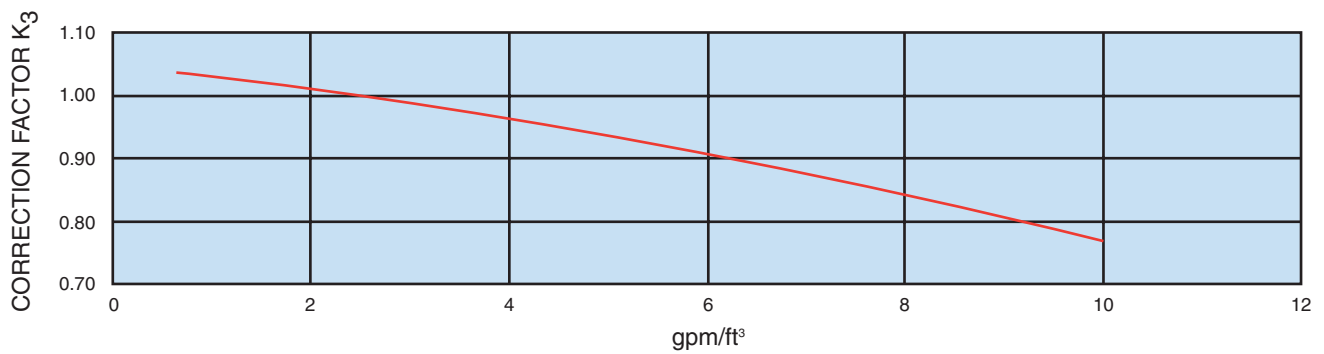
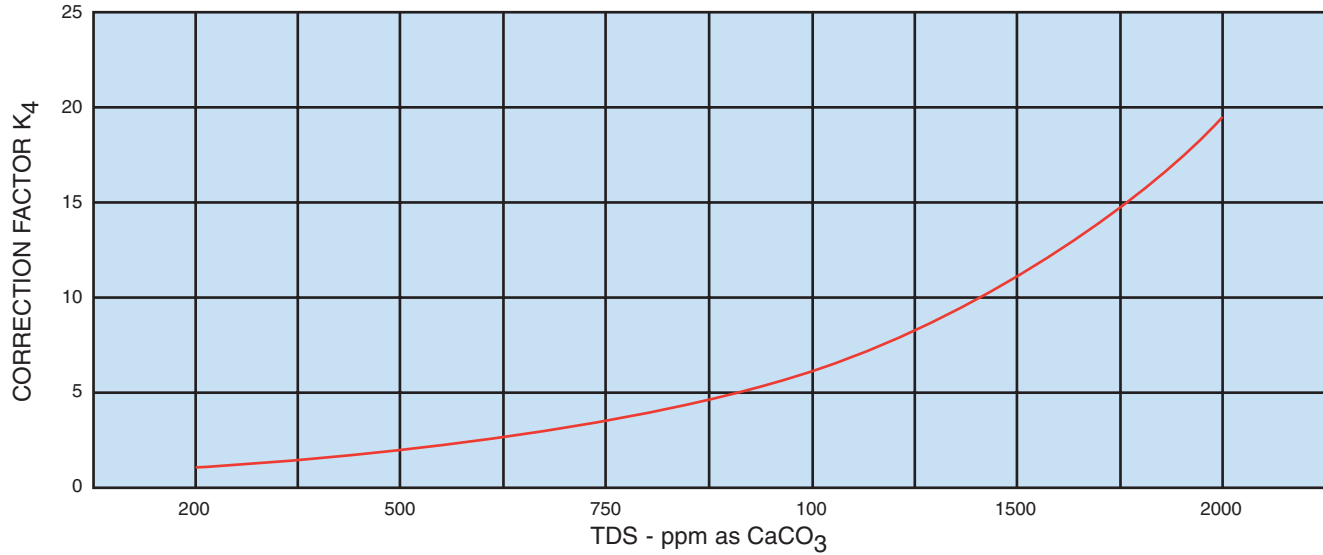


Fig. 10 SOFTENING CO-FLOW

LEAKAGE CORRECTION FOR TDS



U.S.A.

The Purolite Company
150 Monument Road
Bala Cynwyd, PA 19004
Phone: (1) 610-668-9090
Toll Free: 800-343-1500
Telefax: (1) 610-668-8139
Email: sales@puroliteUSA.com

TEXAS

The Purolite Company
1700 West Loop South
Suite 740
Houston, TX 77027
Toll Free: 800-562-6488
Telefax: (1) 713-627-7890

CANADA

The Purolite Company
625 Wabanaki Drive
Unit #2
Kitchener, Ontario N2C 2G3
Toll Free: 800-461-1500
or (1) 519-896-6674
Telefax: (1) 519-896-6679

UNITED KINGDOM

Purolite International Limited
Kershaw House
Great West Road
Junction with Lampton Road
Hounslow, TW5 OBU
Sales Phone: (44) 181-570-4454
Telefax: (44) 181-572-7726

European Marketing
Phone: (44) 181-577-1222
Telefax: (44) 181-577-1136

GERMANY

Purolite Deutschland GmbH
Harkort Strasse 25
40880 Ratingen
Phone: (49) 2102-46033
Telefax: (49) 2102-443663

FRANCE

Purolite International SARL
34 Avenue Matignon
75008 Paris
Phone: (33) 1-4256-4563
Telex: 648856
Telefax: (33) 1-4563-3826

SPAIN

Purolite Iberica S.A.
Parc Tecnologic del Valles
Centre Empreses Noves Technologies
08290 Cerdanyola del Valles (Barcelona)
Phone: (34) 3-582-0266
Telefax: (34) 3-582-0268

EGYPT

Purolite International Middle East
Cairo Liaison Office
12 Obour Gardens
Fifth Floor, App. No. 55
Salah Salem Street
Nasr City, Cairo
Phone: (20) 2-4021477
Telefax: (20) 2-4021478

ITALY

Purolite International S.r.l.
Viale Coni Zugna 29
20144 Milan
Phone: (39) 02-481-8145
Telefax: (39) 02-4801-2359

ROMANIA

Purolite Romania
International Business Center Modern
B-dul Carol I No. 34-36
5th Floor
Bucharest, Sector 2
Phone: (40) 1-250-5053/5028
Telefax: (40) 1-250-5999

POLAND

Head Office
Radus Spolka z o.o.
ul Przebendowskich 33
81-543 Gdynia
Phone/Fax: (48) 58-6248118

GLIWICE

Radus Spolka z o.o.
ul Górnych Wałów 25
44-100 Gliwice
Phone: (48) 32-315-931
Telefax: (48) 32-315-931

SLASK

Radus Spolka z o.o.
ul 3 Maja 3/33
32-600 Oswiecim
Phone: (48) 33-425-603
Telefax: (48) 33-425-603

CZECH & SLOVAK REPUBLICS

Purolite International
Nad Mazankou 17
182 00 Prague 8
Phone: (420) 2-688-1086
Telefax: (420) 2-688-1086

RUSSIA

Head Office
Purolite International
10th Floor
36 Lyusinovskaya Street
Moscow
Phone: (7) 095-564-8120
Telefax: (7) 095-564-8121

ST. PETERSBURG

Purolite International Limited
12 Building A Tambovskaya St.
St. Petersburg
192007 Russian Federation
Phone: (7) 812-327-8530
Telefax: (7) 812-327-9079

KAZAKHSTAN

Purolite RH Limited
Office 205
240 Dostyk AV.
Almaty 480051
Phone: (7) 3272-641-234
Telefax: (7) 3272-641-234

SINGAPORE

Purolite International (Singapore)
PTE Limited
32-04 The Concourse
300 Beach Road, 199555
Phone: (65) 297-0889
297-1453
Telefax: (65) 297-1986

CHINA

Head office
Purolite (China) Company, Ltd.
Chengguan Town
Deqing County
Zhejiang Province 313200
Phone: (86) 572-842-2908
Telefax: (86) 572-842-3954

TAIWAN

Purolite International
16F-2, No. 191
Fu-hsing N. Road, Taipei
Phone: (886) 2-546-7078
Telefax: (886) 2-546-7069

MEXICO

Purolite International, S.A. De C.V.
World Trade Center
Montecito 38, Piso 33, Oficina-19
Mexico D.F. 03810
Phone: (52) 5-488-0904
Telefax: (52) 5-488-0906

UKRAINE

Purolite International Limited
2 Korolenko Street.
Dnepropetrovsk 320070
Phone: (38) 0562-320-065
0562-320-066
Telefax: (38) 0562-320-067

KOREA

Purolite International (Korea) LLC
Dae Yeon Bldg., Suite 403
943-30 Daechi-dong
Kangnam-gu, Seoul
Phone: (82) 2-3453-7062/7063
Telefax: (82) 2-3453-7064