

RATED FOR INDOOR USE ONLY

PRODUCT SPECIFICATION

Surface Mount bottle filling station designed for installations with limited wall depth. Bottle filling unit shall include an electronic sensor for touchless activation with auto 20-second shut-off timer. Shall include Green Ticker™ displaying count of plastic bottles saved from waste. Bottle filler shall provide 1.1-1.5 gpm flow rate with laminar flow to minimize splashing. Shall include integrated silver ion anti-microbial protection in key areas. Unit shall meet ADA guidelines. Unit shall be lead-free design which is certified to NSF/ANSI 61 and 372 and meets Federal and State low-lead requirements. Unit shall be certified to UL399 and CAN/CSA 22.2 No. 120.



Model
EZWSSM

STANDARD FEATURES

- Sanitary, touchless activation with auto 20-second shut-off
- Integrated Silver Ion Anti-microbial Protection in key areas
- Quick Fill Rate: 1.5 gpm; 1.1 gpm when connected to remote chiller
- Laminar Flow provides minimal splash
- Real Drain System eliminates standing water
- No bubbler required
- Visual User Interface display includes:
 - Innovative Green Ticker™ counts bottles saved from waste.
- Optional remote chiller can be installed within 15 feet of unit to deliver chilled drinking water

CONSTRUCTION

- Stainless steel bottle filler wrapper with ABS plastic alcove
- Includes robust hanging bracket for surface mount

CAPACITIES CHART

Model	Voltage / Hertz	Chilling Capacity	F.L. Amps	Rated Watts	Approx Ship Wt.
EZWSSM	115V / 60Hz	N/A unless connect to chiller	1.0	15	18
EZWSSMJ0	220V / 50-60HZ	N/A unless connect to chiller	0.5	15	18

The above ratings apply only to the EZWSSM unit. Ratings for the chiller not included

WARRANTY: Electrical components and water system are warranted for 12 months from date of installation or 18 months from factory shipment, whichever date falls first.

CERTIFICATIONS / STANDARDS

- ADA Compliant
- UL399 and CAN/CSA 22.2 No. 120 Certified
(Only 115V model are certified)
- ANSI/NSF 61 and 372 Certified)
- GreenSpec[®] Listed



This specification describes an Elkay product with design, quality and functional benefits to the user. When making a comparison of other producer's offerings, be certain these features are not overlooked.

EZH20[®] Bottle Filling Station
Surface Mount
Model EZWSSM

ELKAY[®]
ROUGH-IN

IMPORTANT!

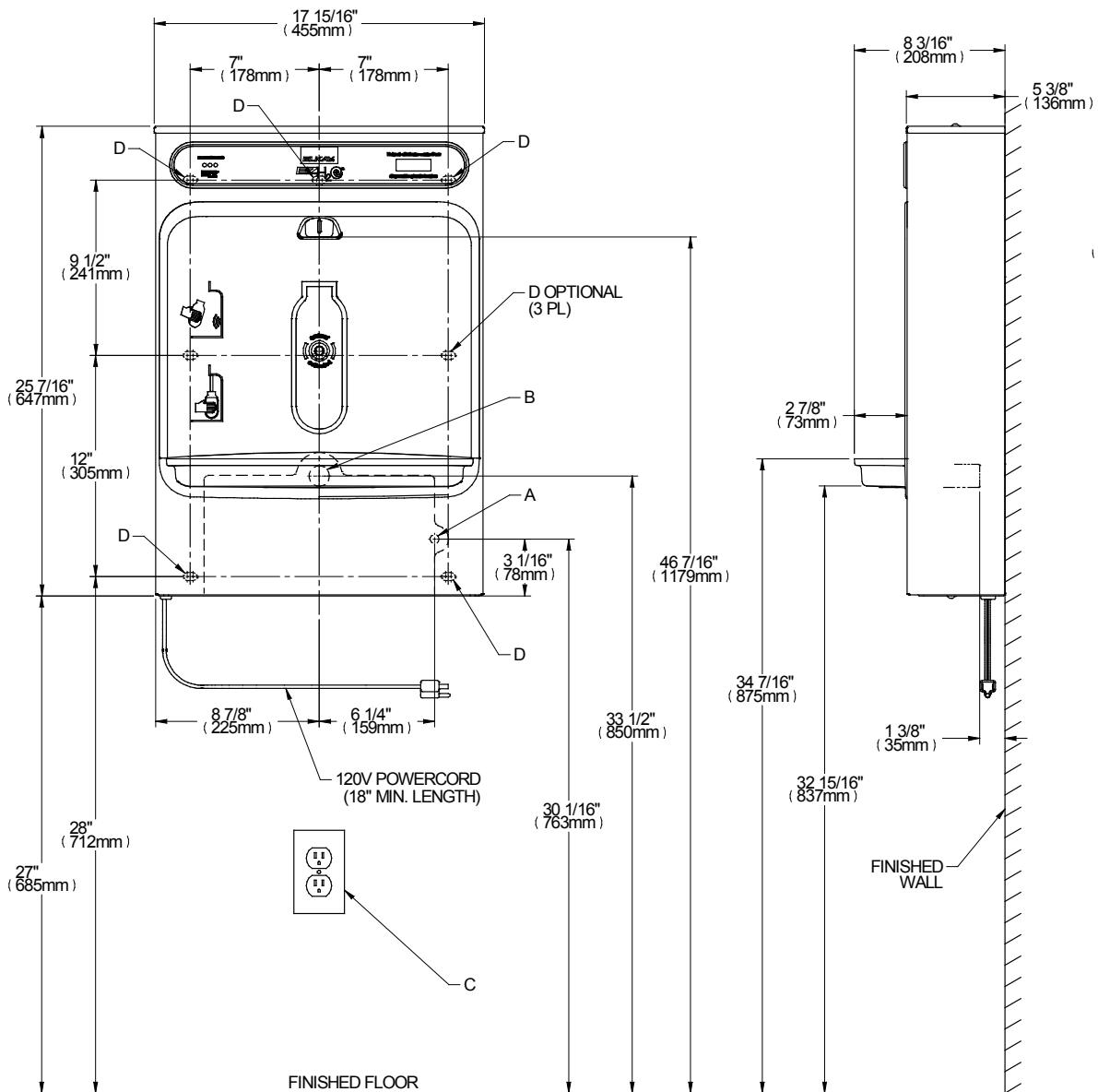
INSTALLATION NOTES:

- Ensure wall is structurally sound to bear the loads imparted by the surface mount bottle filler.

**Rated for indoor use only*

ELECTRICAL

EZH20 equipped with electrical cord and three-prong molded rubber plug for use with 15-amp minimum receptacle. Rated at 115V/60Hz, single phase.



LEGEND:

- A = RECOMMENDED WATER SUPPLY LOCATION ; 1/2" IPS MAXIMUM PIPE SIZE. SERVICE STOP VALVE NOT FURNISHED.
- B = RECOMMENDED LOCATION FOR WASTE OUTLET 1-1/4" O.D. MAXIMUM PIPE SIZE.
- C = ELECTRICAL OUTLET, THREE (3) CONDUCTOR GROUNDED. LOCATE WITHIN SAFE REACH OF POWER CORD.
- D = 7/16" X 3/4" OBOUNDED MOUNTING HOLES FOR FASTENING BACKPLATE TO WALL.

Job Name:	_____
Date:	_____ Qty: _____
Contact Info (Name, Phone, Email):	_____
Approval:	_____